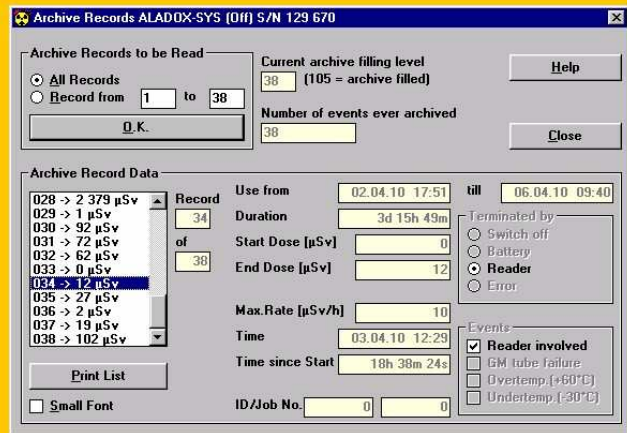


Model 667.9



Standard software included

Model 667.11



Dosimeter reading slot 667.11-50

LCD 667.11-40

- Wireless inductive interface to the dosimeter, suited for all types of Automess digital dosimeters
- Designed to operate with a PC where the PC controls all functions through the serial RS232 interface
- Independent of the PC's operating system, drivers or similar are not required
- Two relay outputs for triggering access controls or similar, thereby extending the PC by two relays
- The manual describes all commands for the RS232 interface in detail thereby enabling the user to create his own PC software
- Standard software included

## Dosimeter Readers 667.9 and 667.11

Dosimeter Readers for all types of Automess digital dosimeters

**APPLICATION AND DESIGN**

The Dosimeter Readers allow to read and program all types of Automess digital dosimeters. They are connected to a standard PC through a serial RS232 interface. Two relays can be used to unlock access controls like turnstiles.

Since the readers are intended to be used together with a PC, they provide primarily only those elements which cannot be supplied by a standard PC, i.e. the dosimeter reading slot and the relays.

The model 667.9 comes in a desk case. The front panel accommodates the dosimeter reading slot, an LED lamp, and a buzzer at its bottom (not visible).

If there is not enough space for the desktop reader 667.9 and the PC's screen, the model 667.11 provides a remote dosimeter reading slot (required accessory) and the possibility to connect a remote small LCD with two lines of 16 characters each (optional accessory).

Model 667.10 was a predecessor of model 667.11 and is no longer supported.

All models are supplied by 12 Volt DC from a mains adapter.

The PC can perform these actions by corresponding commands through the RS232 interface:

- Reading all dosimeter data.
- Programming the dosimeter with alarm thresholds and ID number, with or without clearing dose and maximum dose rate.
- Reading the archive of ALADOX dosimeters.
- Activating the reader's buzzer.
- Activating the reader's relays.
- Setting the reader's clock and thereby indirectly setting the clock of ALADOX dosimeters.
- Writing to the LCD of the reader 667.11.

These functions allow to integrate the Dosimeter Readers in an electronic personal dosimetry system as is used in nuclear facilities, for example. This will usually require application specific PC software to control the readers. We cannot provide such application specific software. Such software can be created without our assistance with the help of the interface description in the reader's manual. However, we do provide standard software for small applications, see the next section.

**STANDARD SOFTWARE (included)**

Two software packages for Microsoft Windows® are available:

- **DOSIM**  
This software allows to read and program dosimeters manually, for example programming them with special alarm thresholds. It also allows to read the archive of ALADOX dosimeters.
- **WinEPDS**  
This is a small but complete system for personal and job dosimetry. It supports a maximum of 200 persons and one single Dosimeter Reader which acts simultaneously as both the entry and exit reader to and from the controlled area.

**ACCESSORIES**

**Mains adapter 667.9.2 (recommended accessory)**

The reader's chassis socket provides a bayonet lock allowing to lock the plug. The bayonet plug of the mains adapter 667.9.2 matches that socket. Alternatively you may use a standard retail mains adapter without that lock, however we do not recommend to do so.

**RS232 null modem cable EB84-0207 (recommended accessory)**

This cable (length 3 m, DB-9 female/female) connects the RS232 interfaces of the Dosimeter Reader and the PC. Alternatively you may use a standard retail cable, however observe the wiring of handshake signals which is not standardised.

**External dosimeter reading slot 667.11-50 (required accessory for model 667.11)**

This reading slot (see cover image) is required for the model 667.11. It is offered separately because it is also available as a spare part. The fixed connecting cable is 2 m long.

**External LCDs 667.11-40 and 667.11-41 (optional accessories for model 667.11)**

Both LCDs provide LED backlight and just differ in size. Model 667.11-40 (see cover image) has small characters 5.56 mm high, model 667.11-41 has large characters 9.66 mm high. The removable connecting cable is 2 m long.

**TECHNICAL DATA**

**Dosimeter Readers**

RS232 interface	male DB-9 connector, PC pin assignment
Relays	two break-and-make relays, each may switch up to 24 Volts / 1 Amp.
Temperature range	+10 °C to +35 °C
Humidity	20% to 80 % relative humidity
Case	667.9: plastic desk case 667.11: rectangular plastic case
Dimensions	height 667.9: 120 mm height 667.11: 62 mm, width 157 mm, depth 215 mm
Weight	667.9: approx. 950 g 667.11: approx. 650 g

**Mains adapter 667.9.2**

Input	100 to 240 VAC, 47 to 63 Hz
Output	12 VDC ±5%, short circuit protected, cable length 1.8 m, coaxial plug 5.5 x 2.1 mm with bayonet lock

- SUBJECT TO CHANGE WITHOUT NOTICE -